



# Crackling Techniques



McCloskey® Special Effects® Weathered and Porcelain Crackle Glazes add character and style to your home. This aged look complements casual, country or traditional decorating styles. Even a formal room can be enhanced by crackling a piece of furniture or an accessory. Create a masterpiece out of a simple end table. Highlight a worn-out cupboard. For an eclectic style, crackle finish your woodwork and trim. For a truly dramatic look, apply one of these finishes to the walls of a small room such as a powder room where you get a close-up view of the cracks and aging effects.

## MATERIALS CHECKLIST



1



2



3



1) McCloskey® Special Effects® Base Coat in desired color

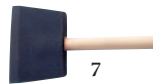
2) McCloskey® Special Effects® Flat Coat in desired color (Weathered Crackle only)

3) McCloskey® Special Effects® Porcelain Crackle Glaze or Weathered Crackle Glaze, Aging Glaze, if desired

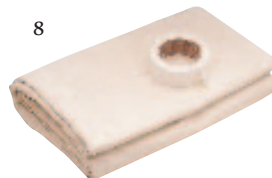
4) McCloskey® Water Base Polyurethane Finish or McCloskey® Clear Coat



6



7



8

5) Paint Roller with 1/4" nap for Weathered Crackle Glaze, 3/8" nap for Base Coat, & Paint Tray

6) Premium-Quality Nylon Paintbrush

7) Foam Brush and Rag (Porcelain Crackle only)

8) Painter's Tape & Drop Cloth

9) Newspaper

10) Practice Board

**Product Information Hotline:** To answer any faux finishing question, call our toll free Product Information Hotline: 1-800-345-4530 seven days a week, 8:00 AM to 5:00 PM. or contact us via email at [techsupport@valspar.com](mailto:techsupport@valspar.com).

McCloskey is a division of the Valspar Corporation.

## Instant Aged Look

It's amazing how easy and inexpensive it is to create these unique looks. Porcelain Crackle recreates the convincing look of finely aged porcelain with its intricate network of fine lines. This technique is ideal on walls, woodwork or accent pieces such as vases or mirror frames. The basic technique is simple. Apply an even coat of Special Effects Porcelain Crackle Glaze over a dry foundation of Base Coat.

As the crackle glaze dries, cracks will emerge in the Base Coat. To enhance a lightly colored Base Coat with dark lines, add a coat of Aging Glaze in Asphaltum. To lighten the cracks of a dark Base Coat, use Pickling White. For a splash of color, apply a coat of your favorite shade of Translucent Color, Opal or Pearl Glaze.

### *creative color source*

Porcelain Crackle and Weathered Crackle finishes bring out the beauty of our creative color system. A glimpse at this exclusive color system gives an overview of the vast variety of effects you can create. The color chips show you what the Crackle Finish looks like with a unique palette of Base Coats and color combinations. It's easy to choose your colors with confidence.



# 1

Protect areas you don't wish to paint with masking paper or tape. Apply Base Coat of your choice to surface, following label directions. Allow to dry for at least 4 hours, or overnight. Carefully remove tape if you are leaving project overnight, as tape left on too long may lift off some of the Base Coat.

*Special Effects Base Coat  
shown here in San Juan Hill*



# 2

Reapply tape, if necessary. Now apply an even coat of Special Effects Porcelain Crackle Glaze using a foam brush. Work the brush in a pattern of small, overlapping X's, covering the entire surface. A good rule of thumb to remember is that the thicker the coat of Crackle Glaze, the more pronounced the cracks will be. A thinner coat of Crackle Glaze will produce finer, smaller cracks.



# 3



When you have covered the area with the pattern of X's, reload the foam brush and begin to smooth out the surface. Simply run the brush lightly over the surface, horizontally and vertically. Add more glaze if necessary to even out the coat or to create larger, more pronounced crackling. Then do a final smoothing with long, vertical brush strokes. If you are working on furniture, follow the natural grain of the wood. Remove tape and allow to dry.

# 4

To darken the crackle lines on a lightly colored Base Coat, rub on a coat of Asphaltum Aging Glaze. On a deep colored Base Coat, use Pickling White Aging Glaze to lighten the cracks. If you prefer a more colorful look, use a Translucent Color, Opal or Pearl Glaze instead.



## The Look of Natural Aging

Rooms take on a comfortable, relaxed personality when the walls, woodwork or furniture are finished with Weathered Crackle Glaze. The technique is easy to master. With just a few steps, it duplicates the effects of years of weathering on a surface. Re-create the look of your favorite antiques or rustic homes with very little expense. The weathered crackle look is easy to achieve. Choose contrasting Base Coat and Flat Coat colors. The top layer will crack, revealing the bottom color. For a neutral look, select a light top coat and a darker Base Coat. If you prefer darker colors, choose a deep color top coat and a white or off-white Base Coat. Apply your Base Coat and allow it to dry. Apply an even coat of Weathered Crackle Glaze. When it is dry, apply Flat Coat. As it begins to dry, the cracks will form in the top coat showing the Base Coat beneath. You will have captured years of natural aging in just a day.

# 1

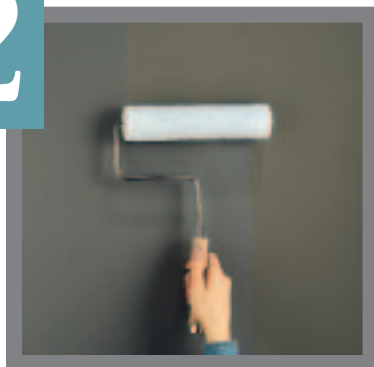
Tape off areas such as woodwork, ceilings or floors where you are not applying the technique. Using a paint roller with  $\frac{3}{8}$ " nap, apply the Base Coat of your choice following directions on label. Allow to dry for at least 4 hours, or overnight. Remove tape if you are leaving the project overnight. Tape left on too long may lift off some of the Base Coat.



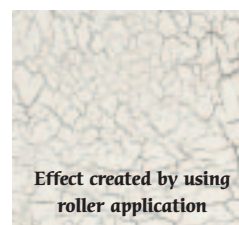
### PROFESSIONAL TIP

Protect your crackle finish on furniture and wood trim from stains, spills and fingerprints by applying McCloskey Polyurethane Water Base Finish in your choice of sheens. For walls and other large areas subjected to heavy traffic, roll on McCloskey Clear Coat in satin or gloss for clear, nonyellowing protection. Wait 3-7 days before applying clear protective coatings over crackle finishes.

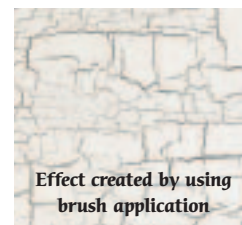
# 2



Reapply tape, if necessary. Using a roller with  $\frac{1}{4}$ " nap or a premium-quality nylon paintbrush, apply an even coat of Special Effects Weathered Crackle Glaze. Apply a generous coat - do not spread too thin. Remove tape and allow the glaze to dry for 1 to 4 hours before applying the top coat. **Do not wait longer than 4 hours before applying Flat Coat.** If you wait too long, you will need to reapply the crackle glaze.



Effect created by using roller application



Effect created by using brush application

# 3

Reapply tape. Using a roller or nylon brush, apply Flat Coat. For best results, apply in one direction. Do not overwork the top coat. Remove tape and allow to dry. If you want a finely cracked, delicate look, we suggest using the roller. If you want a more pronounced effect, use the brush. The top coat will begin to crack a few minutes after application, revealing glimpses of the Base Coat underneath, but the full crackle effect will not be visible for a few hours.

