



Sculpture Stone Carved Impressions



Sculpture Stone is available in Smooth or Coarse texture allowing a wide variety of dimensional finishes. Try one of the techniques discussed or experiment with various tools, stamps or stencils to create your own custom finish. Paint or glaze over Sculpture Stone to mimic the look of aged plaster.

MATERIALS CHECKLIST



- 1) McCloskey® Special Effects® Sculpture Stone Smooth
- 2) McCloskey® Special Effects® Translucent Color or Metallic Glaze in desired color
- 3) Symphony™ Color Washing Brush
- 4) Symphony™ Texturing & Polishing Trowel

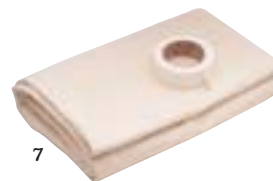


- 5) Paint Roller with 1/2" Roller Cover or 3/8" Nap Roller Cover & Paint Tray



- 6) Symphony™ Cheesecloth

- 7) Painter's Tape & Drop Cloth



- 8) Practice Board

Product Information Hotline: To answer any faux finishing question, call our toll free Product Information Hotline: 1-800-345-4530 or contact us via email at techsupport@valspar.com. McCloskey is a division of the Valspar Corporation.



1. Using a 1/2" nap roller cover, apply the Sculpture Stone to an area about 3' x 3', leaving random, not straight edges.
2. Using a Symphony™ trowel, smooth out the surface like "frosting a cake". Do not overwork the texture or you will develop too many trowel marks. Do not let the texture dry.
3. While the Sculpture Stone is still wet use the pointed end of a paint brush or some other pointed object to randomly trace designs. Clean the pointed object frequently to avoid forming "clumps".
4. Roll an adjacent 3' x 3' area with more Sculpture Stone, overlapping the edge slightly to blend. Repeat the "troweling" and design steps. Stop only at natural breaks in the wall such as doors, windows and corners to avoid unsightly seams in your texture. Let dry thoroughly, usually overnight.
5. Follow "Glazing Technique Steps" to finish your look.

Sculpture Stone Glazing Techniques



Your sculptured finish now needs a coat of color to beautify and enhance the textured surface. Use Special Effects® Color, Opal, Pearl or Metallic Glazes to add depth and color.



1

Use a 3/8" nap roller and roll a thin coating of glaze over an area about 3' x 3' being certain to force glaze into depressions of the textured surface. The Sculpture Stone is porous and will soak up much of the glaze, causing the glaze to dry quickly, so working with a partner is recommended. With one partner rolling the glaze on, and the second partner removing excess glaze and softening the glaze as outlined in step 2 will ensure successful results. DO NOT let the glaze dry before moving to next step.



2

Use a Symphony™ Cheesecloth, Softening Brush or a cotton rag to gently rub the surface to remove some of the glaze and further highlight the texture. Remove as much (or little) of the glaze as you choose. This step should also eliminate any roller marks left from rolling the glaze onto the surface. If you remove too much glaze in some areas simply re-roll glaze onto the area and soften again. Allow the glaze to dry for 48 hours.

3



OPTIONAL STEP:

To further enhance your finish, you may elect to use two or more glaze colors creating a more complex and alluring finish. Roll-on the first glaze color following Step 1. While the glaze is very wet, use a Symphony™ Color Washing Brush to add a second (or more) glaze working the glazes together in a "wet on wet" fashion. These additional colors are "accents" and should be used sparingly. BEFORE the glaze dries you may elect to further soften these colors following Step 2, again removing as much (or little) wet glaze as you desire.

DECORATIVE OPTION:

Special Effects® Translucent Color Glazes are the perfect color finish for Sculpture Stone, but do not overlook the beauty and drama that can be created by using Metallic, Opal and Pearl Glazes with Sculpture Stone. The porous nature of Sculpture Stone, will diminish the metallic effects of these iridescent glazes and create soft, lustrous finishes.