



Add Textured “Stencil Design” with Sculpture Paste or Crackle Paste



Sculpture Stone is available in Smooth or Coarse texture allowing a wide variety of dimensional finishes. Try one of the techniques discussed or experiment with various tools, stamps or stencils to create your own custom finish. Paint or glaze over Sculpture Stone to mimic the look of aged plaster.

MATERIALS CHECKLIST



1) McCloskey® Special Effects® Sculpture Paste or Crackle Paste

2) McCloskey® Special Effects® Translucent Color or Metallic Glaze in desired color

3) Symphony™ Color Washing Brush

4) Symphony™ Texturing & Polishing Trowel

5) Paint Roller with ½" Roller Cover or ¾" Nap Roller Cover & Paint Tray

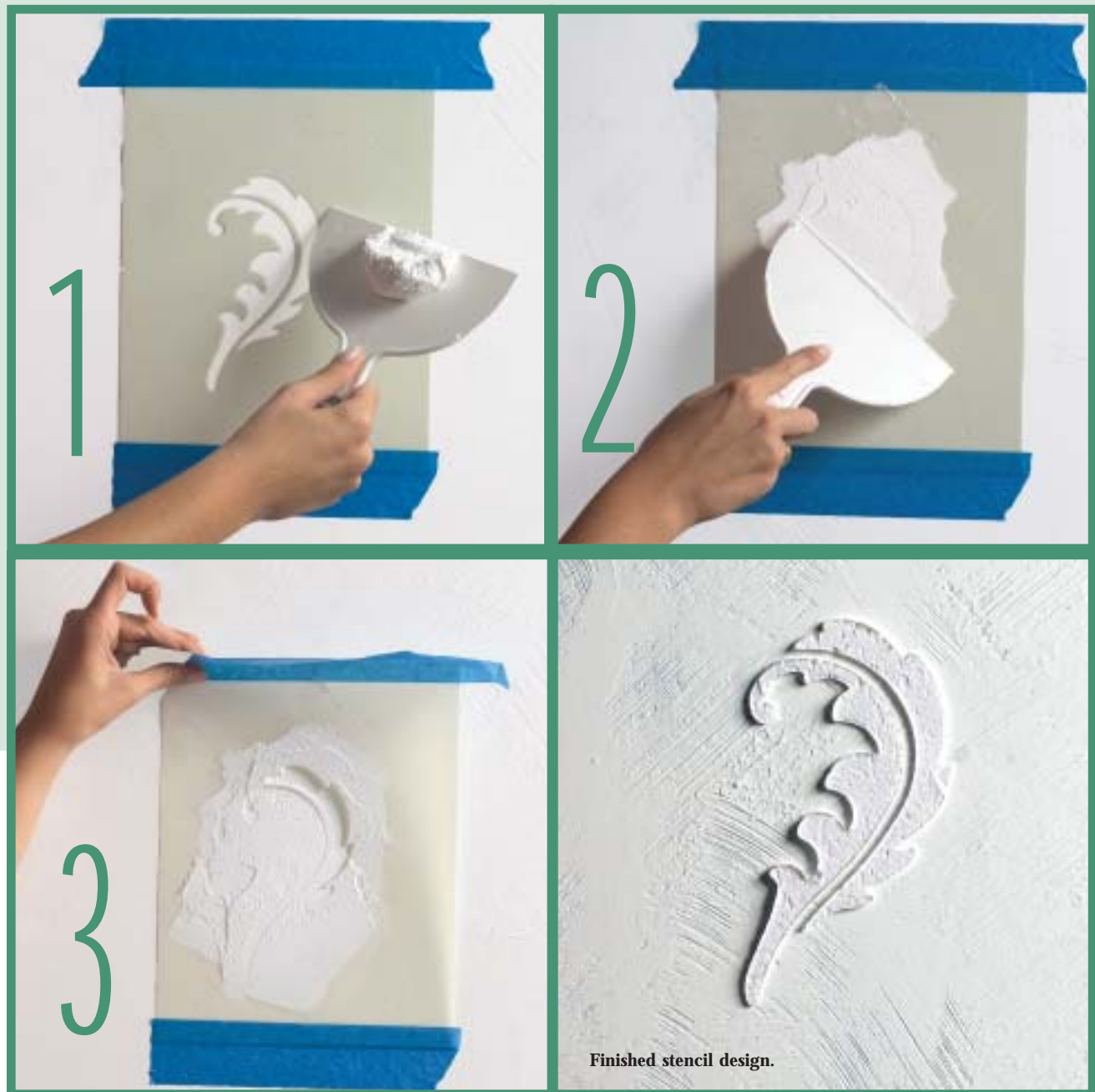
6) Spackling Knife

7) Symphony™ Cheesecloth

8) Painter's Tape & Drop Cloth

9) Practice Board

10) Any type of Stencil



1. Tape a heavy-gauge stencil to the surface of dried Sculpture Stone. Using a plastic spackling knife, apply Sculpture Paste or Crackle Paste to stencil from top to bottom. Be careful not to apply heavy pressure (like frosting a cake).
2. Continue to smooth the paste to a uniform thickness, again being careful not to use excessive force causing the paste to "bleed" under the stencil and ruin the design.

3. Carefully remove the stencil by lifting it evenly off the surface. If creating a border, repeat stencil across wall. Allow the paste to dry overnight.
4. Finish your project by glazing with your choice of glaze. Using a cotton cloth, gently rub the glaze into the raised design.

TIP: If your design is unsatisfactory, simply scrape off the wet paste, wipe the surface off and begin the process over.

Sculpture Stone Glazing Techniques



Your sculptured finish now needs a coat of color to beautify and enhance the textured surface. Use Special Effects® Color, Opal, Pearl or Metallic Glazes to add depth and color.



1

Use a 3/8" nap roller and roll a thin coating of glaze over an area about 3' x 3' being certain to force glaze into depressions of the textured surface. The Sculpture Stone is porous and will soak up much of the glaze, causing the glaze to dry quickly, so working with a partner is recommended. With one partner rolling the glaze on, and the second partner removing excess glaze and softening the glaze as outlined in step 2 will ensure successful results. DO NOT let the glaze dry before moving to next step.



2

Use a Symphony™ Cheesecloth, Softening Brush or a cotton rag to gently rub the surface to remove some of the glaze and further highlight the texture. Remove as much (or little) of the glaze as you choose. This step should also eliminate any roller marks left from rolling the glaze onto the surface. If you remove too much glaze in some areas simply re-roll glaze onto the area and soften again. Allow the glaze to dry for 48 hours.



3

OPTIONAL STEP:

To further enhance your finish, you may elect to use two or more glaze colors creating a more complex and alluring finish. Roll-on the first glaze color following Step 1. While the glaze is very wet, use a Symphony™ Color Washing Brush to add a second (or more) glaze working the glazes together in a "wet on wet" fashion. These additional colors are "accents" and should be used sparingly. BEFORE the glaze dries you may elect to further soften these colors following Step 2, again removing as much (or little) wet glaze as you desire.

DECORATIVE OPTION:

Special Effects® Translucent Color Glazes are the perfect color finish for Sculpture Stone, but do not overlook the beauty and drama that can be created by using Metallic, Opal and Pearl Glazes with Sculpture Stone. The porous nature of Sculpture Stone, will diminish the metallic effects of these iridescent glazes and create soft, lustrous finishes.