



# Torn Paper Techniques



This dramatic technique creates a layered finish with unique aesthetics by applying pre-painted craft paper in a random pattern to the wall. Depending upon the colors used, this effect can create the impression of authentic stone or create a contemporary fantasy finish of iridescent, shimmering color.

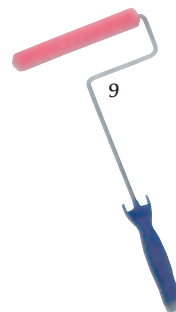
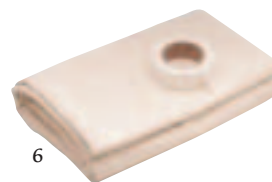
**Torn Paper Technique:**

*Special Effects Pearl, Golden Opal, Slate Blue, Bluebell, Pine Green and Moss Translucent Color Glazes.*

## MATERIALS CHECKLIST

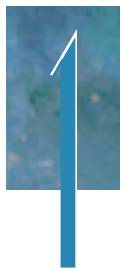


- 1) McCloskey® Special Effects® Translucent Color, Opal or Pearl Glaze in desired colors.
- 2) McCloskey® Special Effects® Clear Coat Protective Finish
- 3) Paint Tray
- 4) Symphony™ Color Washing Brush
- 5) Wallpaper Paste



- 6) Painter's Tape & Drop Cloth
- 7) Practice Board
- 8) Craft Paper (available in rolls at hardware, home improvement centers and arts and crafts stores)
- 9) 6½" Paint Roller with ¼" Nap Roller Cover
- 10) Wallpaper Smoothing Brush

**Product Information Hotline:** To answer any faux finishing question, call our toll free Product Information Hotline: 1-800-345-4530 or contact us via email at [techsupport@valspar.com](mailto:techsupport@valspar.com). McCloskey is a division of the Valspar Corporation.



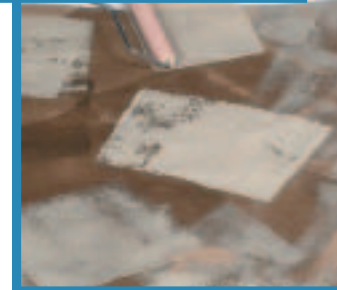
**PREPARING THE WALL**

This technique can be applied to any clean, previously painted or primed surface. Any latex paint from flat to semi-gloss finish is acceptable. Clean all grease, oil, etc. from the surface before proceeding.



**PAINTING THE PAPER**

Cut sheets of craft paper from 4 to 8 feet in length. Use a clean 1/4" nap, 6 1/2" wide roller to randomly apply the darkest color glaze to the paper using a "zig-zag" pattern. Cover about 75% of the paper with this color. Roll the second color glaze (next darkest color) onto the paper. Overlap the first color by 50% and cover most of the bare paper. Using a Symphony™ Color Washing Brush, randomly brush additional color(s) in "X" patterns. Blend the glazes in some areas while leaving the individual colors distinctive in others. Create as much or as little pattern with these additional colors as you choose. Repeat this procedure until all the paper is painted. Allow the paper to dry thoroughly, between 1-4 hours.



**TEARING THE PAPER**

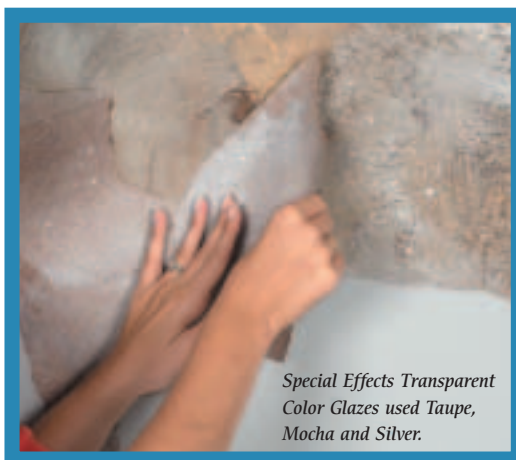
Tear the dried, painted paper into random sizes and shapes. As you tear the paper, ragged edges will develop and expose the unpainted paper.



**APPLYING PAPER TO THE WALL**

Use wallpaper paste to affix the torn paper to the wall. Read and follow all label directions. Apply a light coat of paste uniformly to the back of the torn paper pieces with a paintbrush or roller. Starting in a corner and at the ceiling, apply the first pieces around the perimeter of the wall (using the straight edges in corners and at the ceiling). Press each piece firmly onto the surface with your hand and then smooth out any wrinkles or seams with a wallpaper smoothing brush. Overlap each piece slightly. Repeat with more torn paper and fill in the center of the wall. The paper will shrink as it dries, so overlap

each piece by a minimum of 1/8" or more. Continue smoothing all pieces to avoid bubbles and creases in the paper. TIP: Apply more wallpaper paste with a small brush, as needed, to dry or loose flaps to ensure that all edges are secured. Allow the paper surface to dry for approximately 48 hours.



*Special Effects Transparent Color Glazes used Taupe, Mocha and Silver.*



A clean garage floor covered with a drop cloth makes a good work area.



### SEALING THE PAPER

Apply a coat of McCloskey® Special Effects® Clear Coat with a roller, in your choice of sheen, to protect your painted paper surface.

### DETERMINING HOW MUCH CRAFT PAPER YOU'LL NEED

Determine square footage of wall (length times height, subtract area of large windows and doors). Add 25% to this amount to allow for waste and overlapping during application. Purchase slightly more paper than your calculations suggest. Brown craft paper is available at hardware and paint stores. If you prefer white craft paper, check at local craft stores. For even more options, use colored "construction paper".

