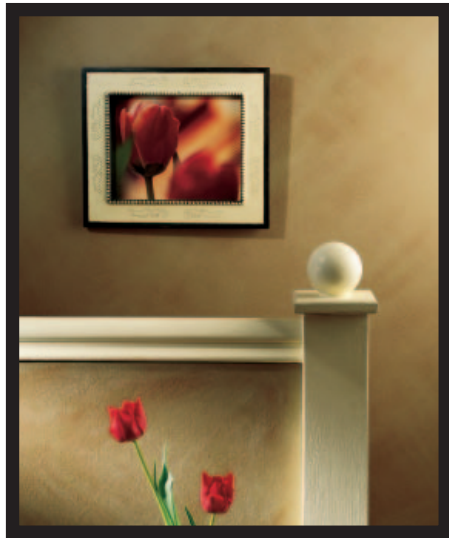




# Subtle Suede Impressions



McCloskey® Suede Impressions wraps a room with warmth, comfort and relaxed ease. The texture is reminiscent of the variations of nap in authentic suede. The colors are inspired by the American landscape...earthy shades and soothing neutrals.

Suede Impressions creates a stunning effect in every room of your home. Turn your living room into a decorator's dream. Add an element of intrigue to your bedroom. Enhance your den or family room with this warm, inviting finish.

## MATERIALS CHECKLIST



1

1) McCloskey® Special Effects™ Suede Impressions paint in desired color



4

4) Premium Quality 3" or 4" Nylon Paintbrush

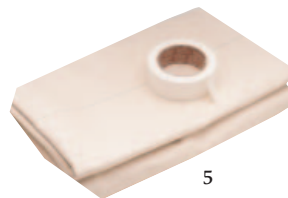
2) McCloskey® Clear Coat Satin Latex Protective Finish (if desired)

5) Painter's Tape & Drop Cloth



2

3) Paint Roller with 3/8" nap & Paint Tray



5

6) Practice Board

**Product Information Hotline:** To answer any faux finishing question, call our toll free Product Information Hotline: 1-800-345-4530 seven days a week, 8:00 AM to 5:00 PM. or contact us via email at [techsupport@valspar.com](mailto:techsupport@valspar.com).

McCloskey is a division of the Valspar Corporation.

# A Three-Dimensional Look in Paint

Suede Impressions is suitable for use on properly prepared wallboard, plaster, wood, masonry and brick. Two coats are needed – the first to set the foundation and the second to add depth and richness. Do not apply to high-traffic surfaces such as trim, woodwork, doors or cabinets.

### Decorator Options:

Paint only a focal wall for a dramatic effect. Or, paint above or below a chair rail and complement it with your favorite paint or wallcoverings.

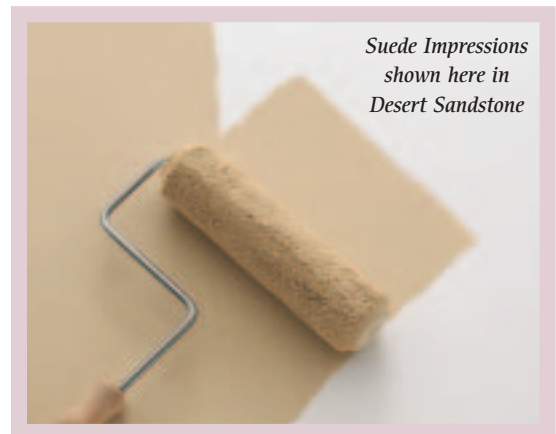
## *creative color source*

Lush Suede Impressions and finely grained Sand Tones are designed with soft, subtle textures in harmony with nature's color palette. Re-create the colors of natural suede and the grained texture of beautiful beaches and enduring stone. Consult our color cards for all of the exciting color options.



1

Make sure walls are properly prepared. New walls must be primed. Walls that have been painted before should be smooth and free of peeling or chipping paint. Tape off areas you don't wish to paint. Using a premium-quality brush, cut in a 3" border around the ceiling, floor, trim edges and corners on one wall only. Do not cut in the entire room, as this may create a banded appearance. Simply brush out the edges on one wall so that you keep a wet edge during rolling for an even look. Apply the first coat using a roller with 3/8" nap and working in 3-foot sections. Roll a large W and then fill in the square. Complete an entire vertical column of 3-foot sections and then finish by rolling full length from ceiling to floor in one direction. Remove tape and allow to dry at least 4 hours.

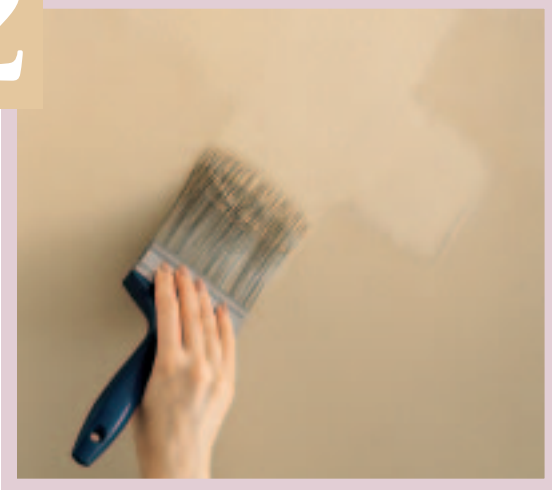


*Suede Impressions shown here in Desert Sandstone*

### PROFESSIONAL TIP

*If a more pronounced suede effect is desired, load your brush and make your first X. Continue making X's without reloading the brush until the paint completely runs out, and you dry brush additional texture onto the surface.*

2



Reapply tape. Now apply the second coat using a technique that you should practice before beginning this project. Random, irregular brush strokes are essential for a successful suede finish. Using a 3" or 4" premium brush, apply Suede Impressions in a series of overlapping X's. Work in sections diagonally, avoiding a squared-off pattern. Start with larger, one-foot X's and then overlap with smaller 4" to 6" X's.

3

Work down and across the wall diagonally, making overlapping X's until the wall is covered. Use both the broad and narrow side of the brush, creating variations in tone that echo the look of authentic suede. You can actually apply multiple strokes on top of each other, adding depth and realism to the finish. Remove masking tape and allow surface to dry. For added durability, brush or roll on a protective finish of McCloskey Satin Clear Coat. This optional coat is recommended for heavy traffic areas such as hallways. Clear Coat will darken the color slightly and add a satin sheen.



#### PROFESSIONAL TIP

*For a softer appearance, use overlapping arcs rather than straight-line X's (see diagram).*



**NOTE:** See Suede Impressions label for more complete application instructions.